

# CHATHAM I

**SQUARE FOOTAGE 1,714**

3 Bedrooms

2.5 Bathrooms



**ELEVATION A**

**Exterior Shown with Standard 7/12 Roof Pitch  
Shown with Optional Exterior Features**

These are artist renditions for sales purposes only. Refer to working drawings for actual dimensions.  
© 2022 Nationwide Homes, Inc. All Rights Reserved.







## CHATHAM I

**Total Finished Area:**  
**1,714 Sq. Ft.**

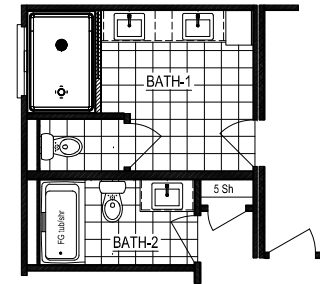
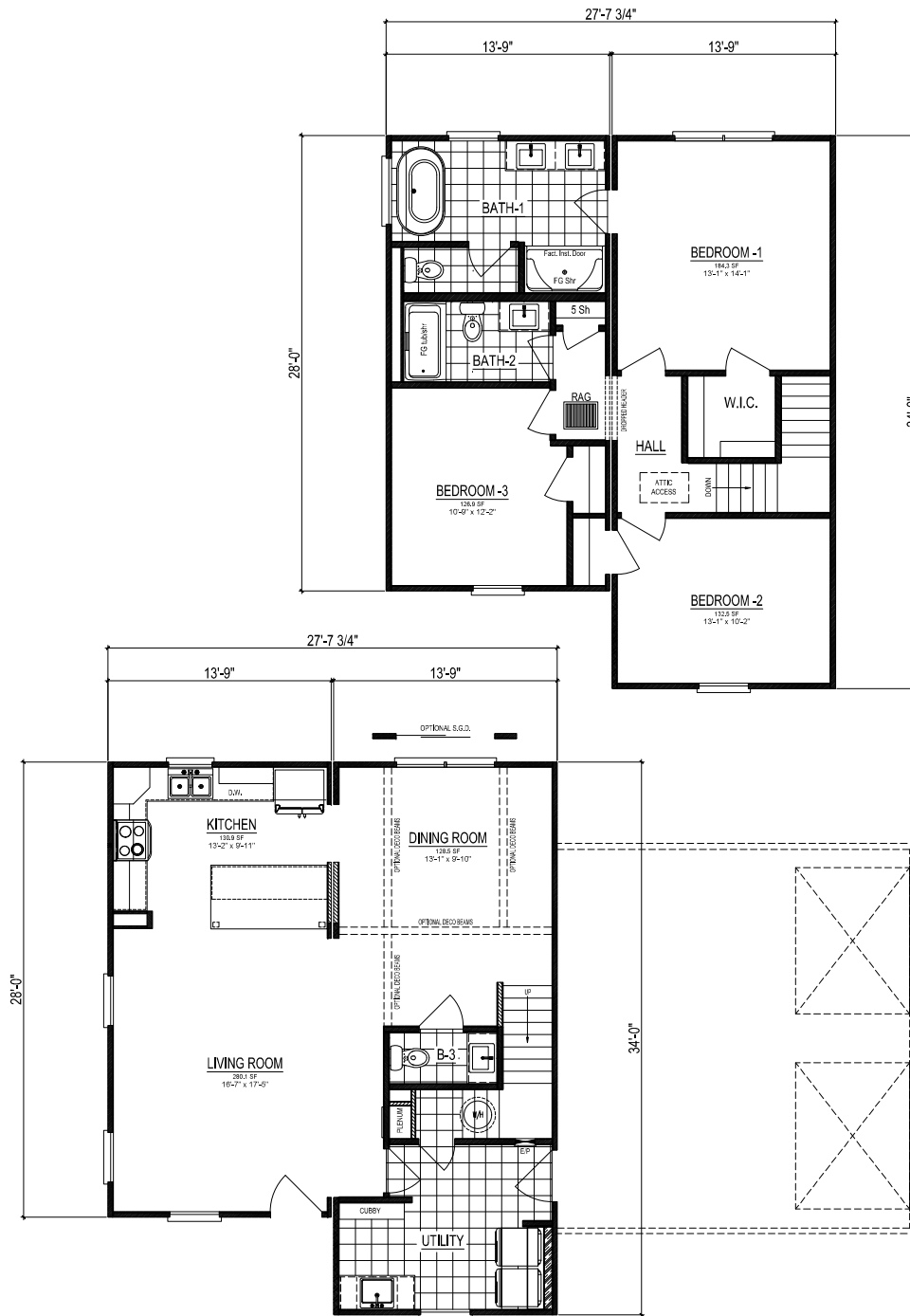
857 Sq. Ft. Finished  
857 Sq. Ft. Finished

### Dimensions:

27'8"W x 34'0"D

**3 Bedrooms**  
**2.5 Bathrooms**

Generous Utility Room  
Utility Cubby & Bench  
Over-sized Kitchen Island  
Rectangular Lavatory Sinks  
Free-Standing Bathtub  
Walk-in Closet  
Hall Linen Closet



Optional Master Bath



### Shown with Optional Interior and Exterior Features

These are artist renditions for sales purposes only.

Refer to working drawings for actual dimensions.

© 2022 Nationwide Homes (Spring 2022)





# CHATHAM II

**SQUARE FOOTAGE 2,130**

3 Bedrooms    2.5 Bathrooms



## ELEVATION A

**Exterior Shown with Standard 7/12 Roof Pitch**  
**Shown with Optional Exterior Features**

These are artist renditions for sales purposes only. Refer to working drawings for actual dimensions.  
© 2022 Nationwide Homes, Inc. All Rights Reserved.





## CHATHAM II

**Total Finished Area:  
2,130 Sq. Ft.**

1,273 Sq. Ft. Finished  
857 Sq. Ft. Finished

### Dimensions:

41'7"W x 34'0"D

### 3 Bedrooms

## 2.5 Bathrooms

## Generous Utility Room

## Utility Cubby & Bench

## Over-sized Kitchen Island

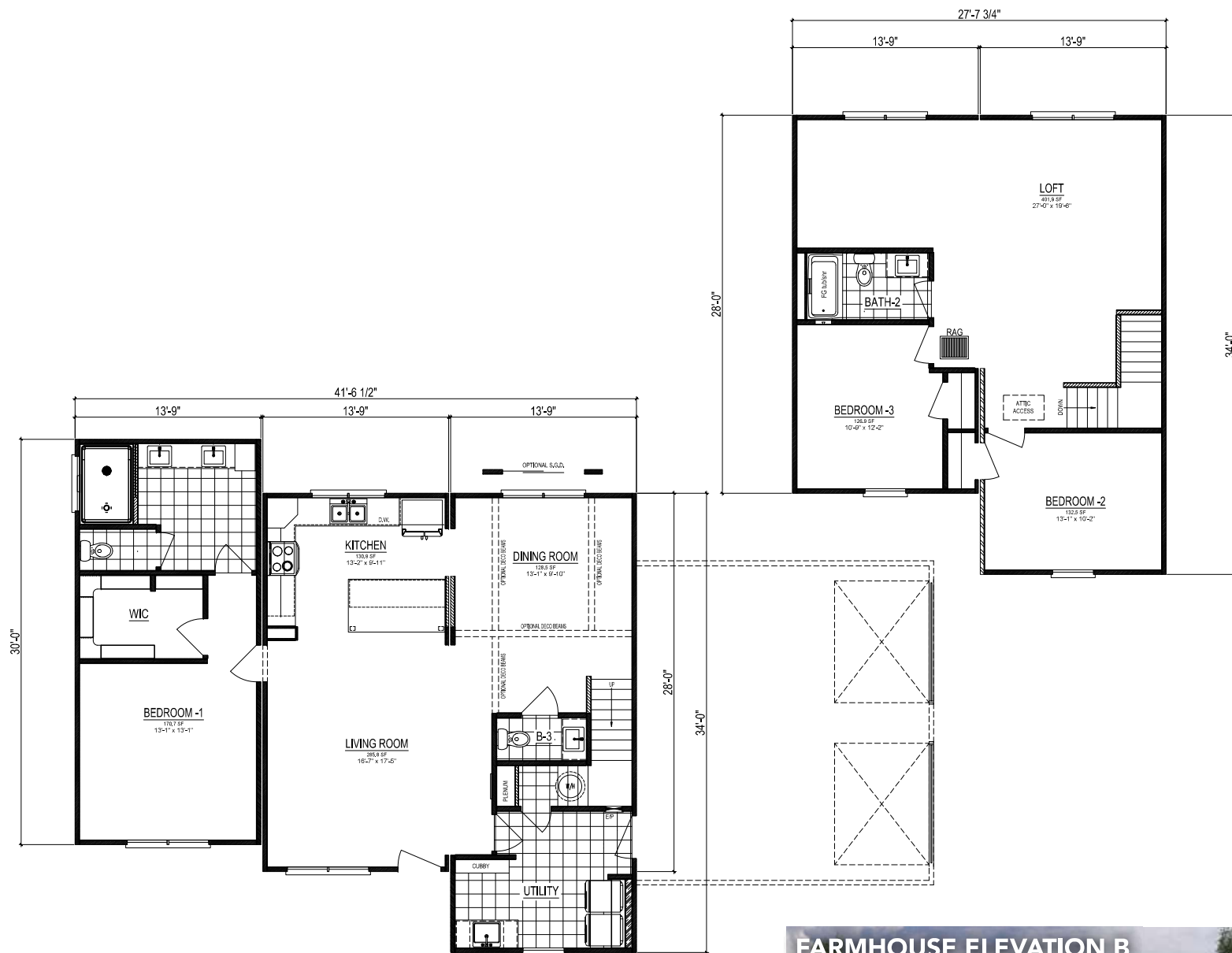
## 1st Floor Primary Bedroom

## Recreational Loft Space

## Rectangular Lavatory Sinks

## Free-Standing Bathtub

## Walk-in Closet



## FARMHOUSE ELEVATION B



**Shown with Optional Interior and Exterior Features**

These are artist renditions for sales purposes only.

Refer to working drawings for actual dimensions.

© 2022 Nationwide Homes (Spring 2022)

